

CREATIVE CABIN

SPACE TO EXPLORE

SCULPTING

CONTROL A STREAM

During heavy rain small streams and trickles of water often appear.

Experiment with putting stones and other objects in its way.

Can you divert the water to take a different path or build a dam to create a pool of deeper water behind it?

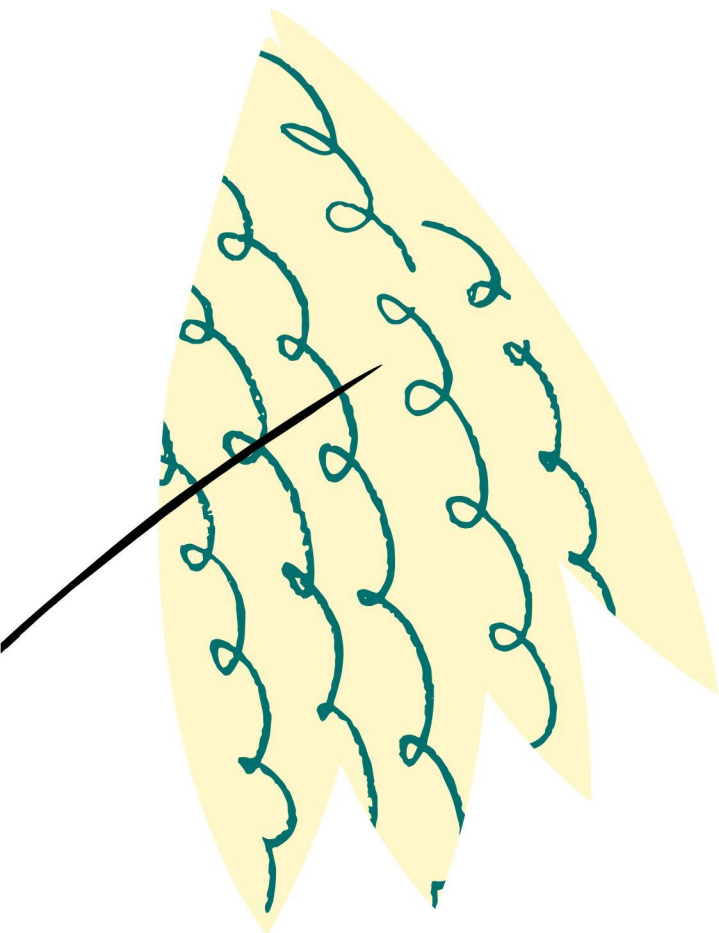
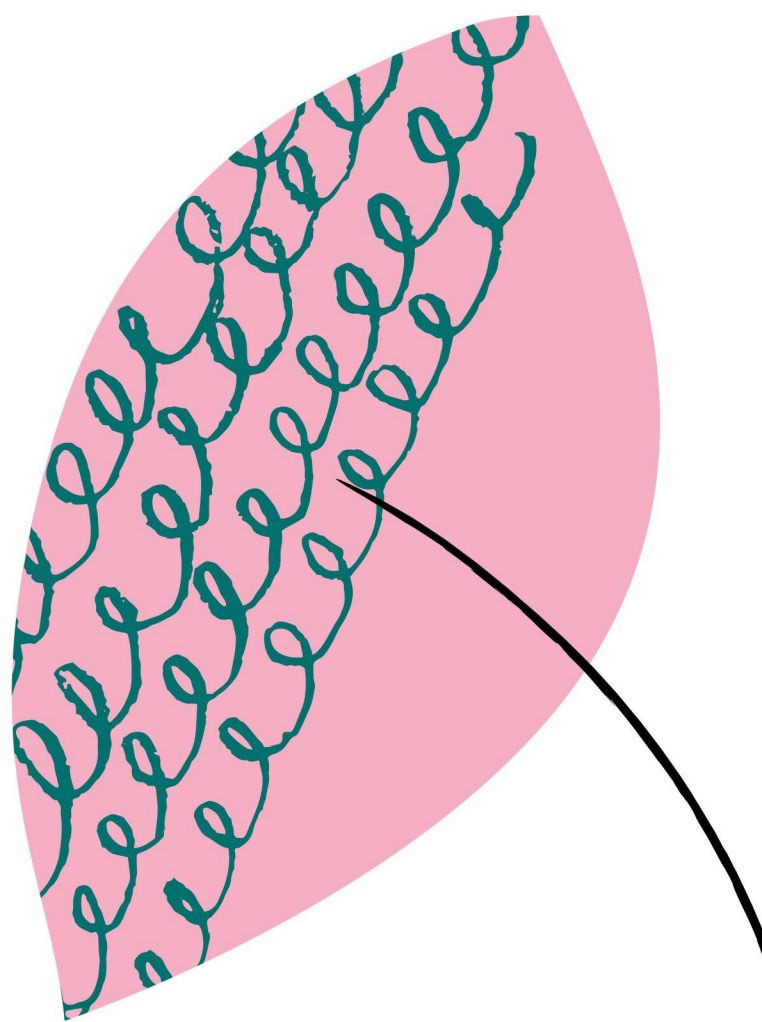
On muddy ground try digging channels to control where the water flows. You could use tiny twigs or leaves as boats to float down your mini streams.

WINDY STREAMERS

The wind loves to play.

Tie some ribbon and tape some strips of paper to a stick or to the washing line. Watch how the wind will move it around, and make shapes with it.

If you have used a stick- how fast do you have to run to make it sail behind you. You can even use a plastic bag if you cut it into strips and tie the strips together.



SHADOW SCULPTURES

Create a sculpture in a sunny spot using found and natural materials.

Have a look at what shape its shadow makes. Go back to look at the shadow at different times of the day.

Its shape, size and positions will change as the sun moves across the sky and the light hits the sculpture at different angles.

You could mark the position of the tip of the shadow with a numbered pebble each hour to create a sundial or draw around it with chalk to see how far it has moved.